

# HOW TO CREATE BOOTABLE USB DRIVE WITH UEFI SHELL

## Index

### Indice generale

<a href="#">Introduction.....</a>	<a href="#">1</a>
<a href="#">Format your media as FAT32.....</a>	<a href="#">2</a>
<a href="#">    Windows.....</a>	<a href="#">2</a>
<a href="#">    Linux.....</a>	<a href="#">3</a>
<a href="#">Prepare your USB drive.....</a>	<a href="#">4</a>

Edited by	Verified by	Approved by
M.B.		

### Revisions History

Revision	Date	Author	Changes
1.0	19 <sup>th</sup> December 2018	M.B.	First Release

## 1 Introduction

The EFI system partition (Extensible Firmware Interface) is a partition on a data storage device (usually a hard disk driver or a solid state drive) that is used by computers adhering to the Unified Extensible Firmware Interface (UEFI).

Since most of the tools we provide are EFI, this guide will help you to create a bootable USB drive with UEFI Shell.

WWW.SECO.COM

AREZZO



Qseven

MILAN



COM Express

FRANKFURT



SBC



SMARC

BOSTON



ETX / XTX

BANGALORE



Carrier board

TAIPEI

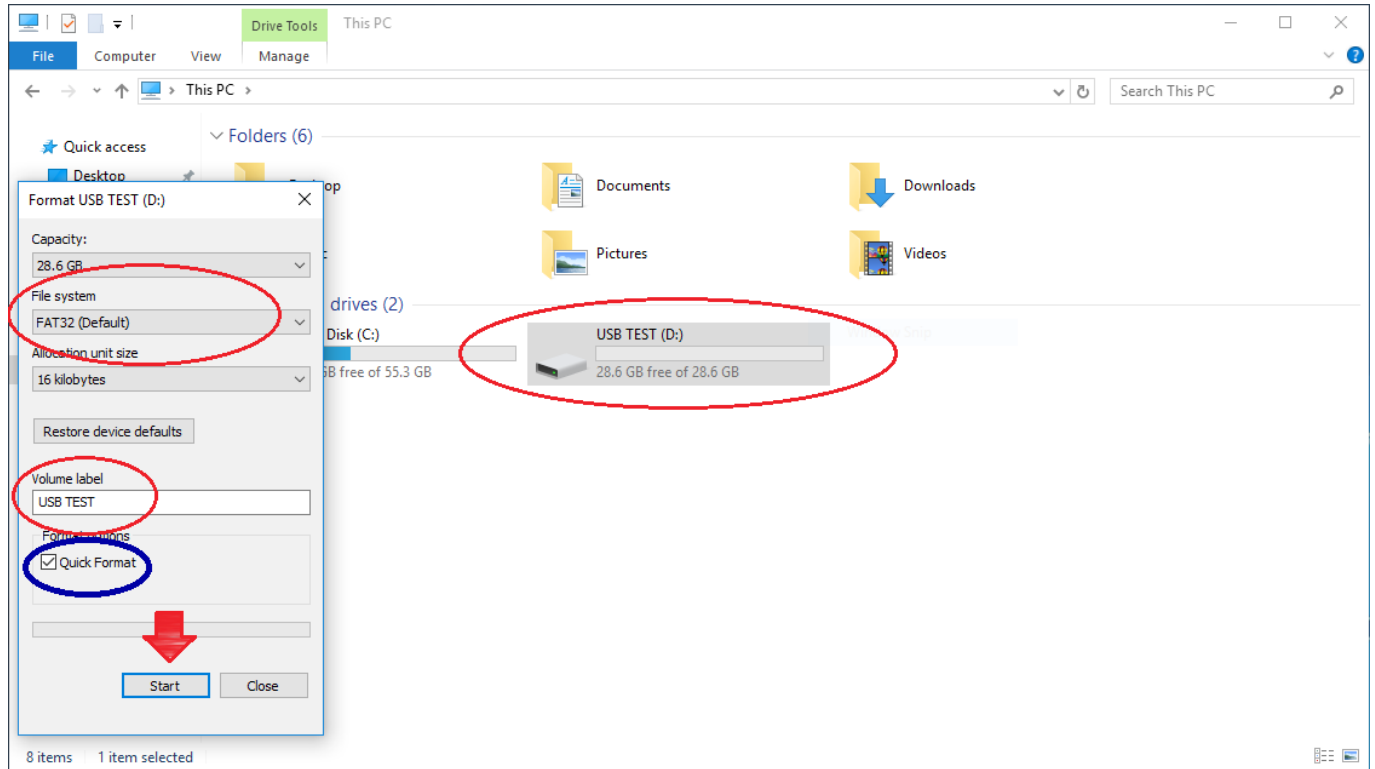


Services & Solutions

## 2 Format your media as FAT32

### 2.1 Windows

Insert your USB drive. Pick out it between all the drives connected to your computer; right-click on your USB drive and select **"Format"**. A new window will appear



The **"Volume label"** field allows you to enter a name for the drive. This label will appear when the drive is connected to devices.

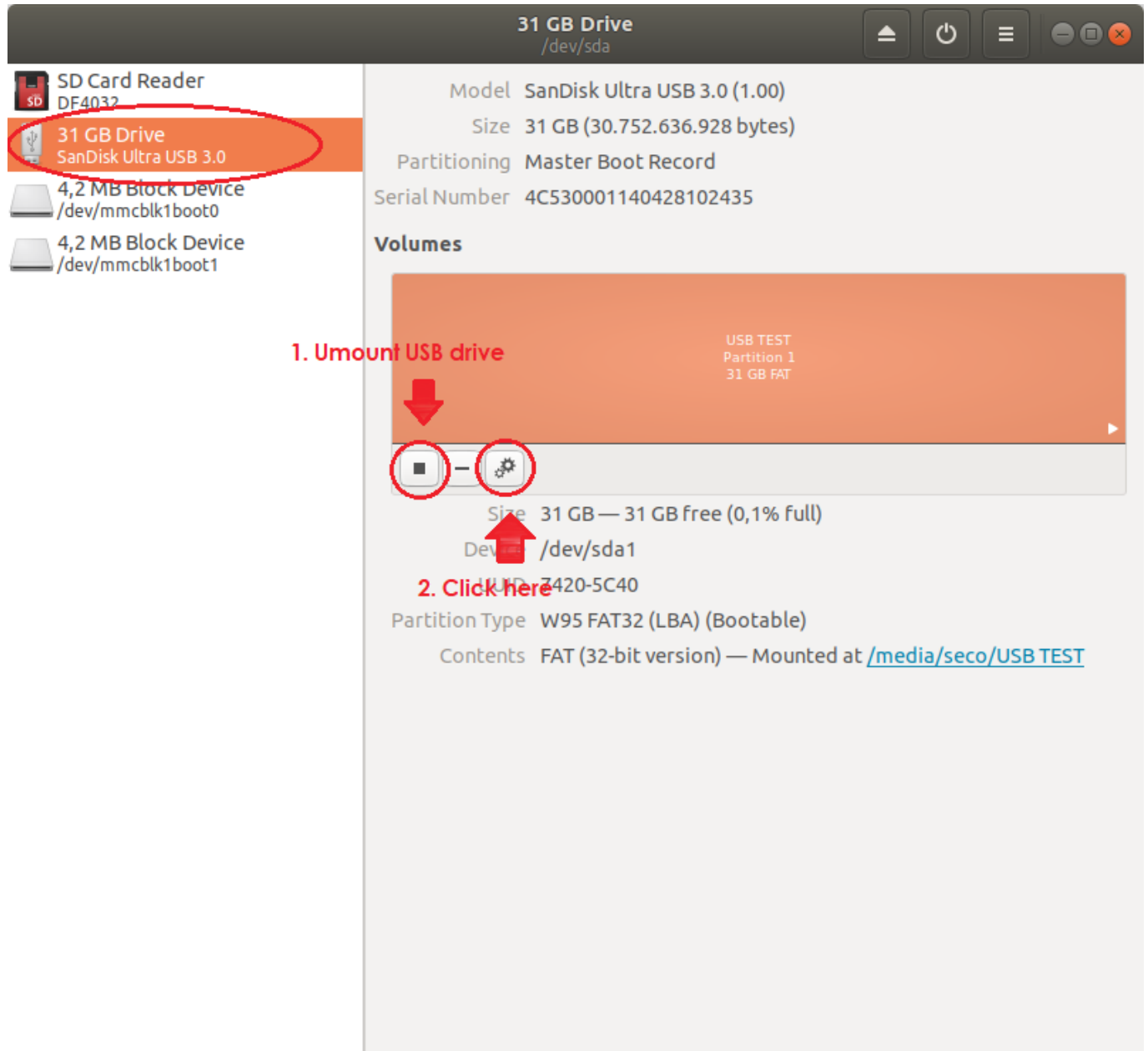
Click "Start" to begin the format process. You'll be prompted to confirm that you want to delete everything on the drive. For most drives, the format should only take a few moments. Performing a full format will take longer.

What is the difference between **"Quick Format"** and not?

Differently from a Quick Format, a Full Format runs an additional step that checks the hard drive for any bad sectors; that's why the full format takes so much longer than the quick one.

## 2.2 Linux

Insert your USB drive. Pick out it between all the drives connected to your computer; select your USB drive.



First of all, umount your USB drive; then select **Settings**.

WWW.SECO.COM

AREZZO



MILAN



FRANKFURT



BOSTON

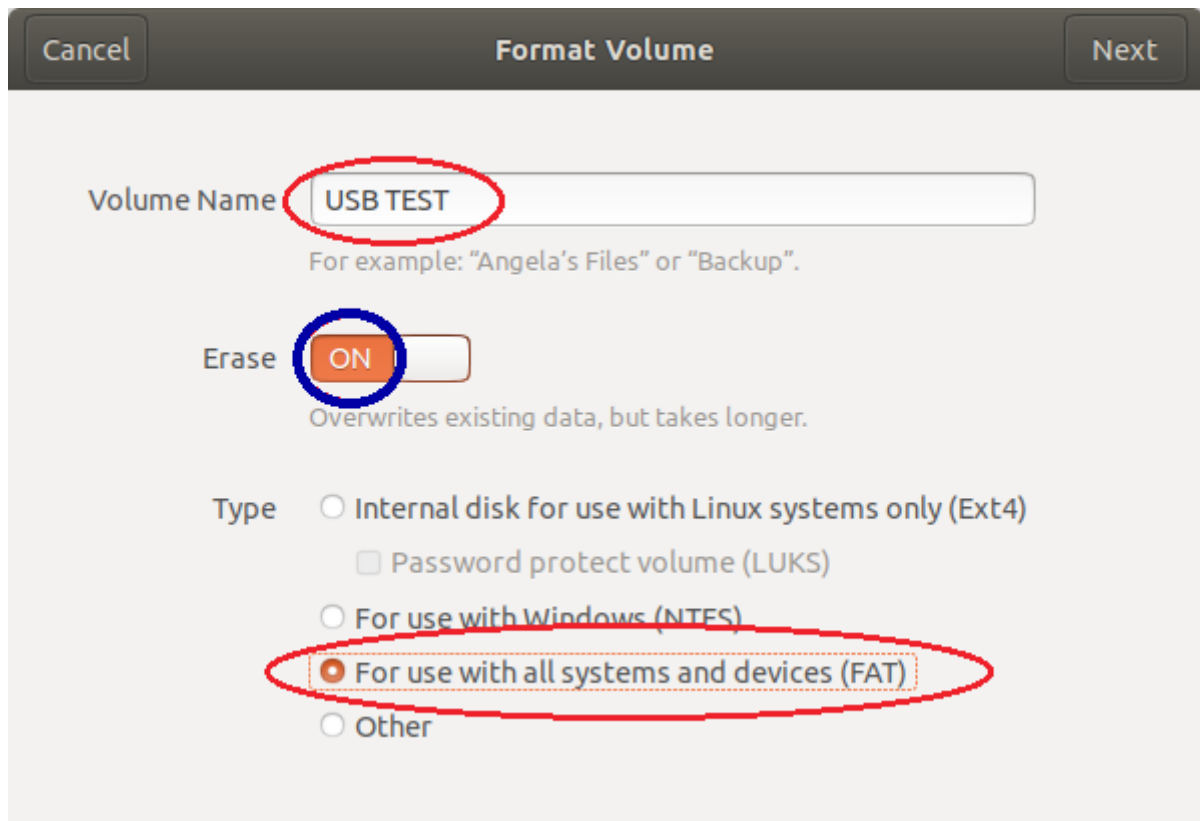


BANGALORE



TAIPEI





The image shows a 'Format Volume' dialog box with a dark header bar containing 'Cancel' and 'Next' buttons. The main area is light gray. At the top, 'Volume Name' is followed by a text input field containing 'USB TEST', which is circled in red. Below this is a hint: 'For example: "Angela's Files" or "Backup".'. The 'Erase' section has a blue circle around the 'ON' button, with the text 'Overwrites existing data, but takes longer.' below it. The 'Type' section has four radio button options: 'Internal disk for use with Linux systems only (Ext4)', 'Password protect volume (LUKS)', 'For use with Windows (NTFS)', and 'For use with all systems and devices (FAT)'. The 'FAT' option is selected and circled in red. A fourth option, 'Other', is partially visible at the bottom.

The "**Volume Name**" field allows you to enter a name for the drive. This label will appear when the drive is connected to devices.

It is important to set "**For use with all systems and device (FAT)**"; while it is not necessary to set "**Erase ON**".

What is the difference between Quick Format and not?

Differently from a Quick Format, a Full Format runs an additional step that checks the hard drive for any bad sectors; that's why the full format takes so much longer than the quick one.

A new window will appear, select "**Format**". You'll be prompted to confirm that you want to delete everything on the drive. For most drives, the format should only take a few moments. Performing a full format will take longer.

WWW.SECO.COM

AREZZO



Qseven

MILAN



COM Express

FRANKFURT



SBC



SMARC

BOSTON



ETX / XTX

BANGALORE



Carrier board

TAIPEI



Services & Solutions



SECO S.p.A.  
Via Calamandrei, 91  
52100 Arezzo – Italy  
Ph: +39 0575 26979  
Fax: +39 0575 350210

P.IVA – VAT IT 00325250512  
Cap. Soc. € 763.439 i.v.  
Reg. Imprese n. 4196 Arezzo  
REA n. 70645  
Meccanografico AR007079

### 3 Prepare your USB drive

---

Create the following directory in your USB drive:

EFI\Boot

Download here the file *Shell.efi*:

<https://github.com/tianocore/edk2/blob/master/ShellBinPkg/UefiShell/X64/Shell.efi>

Rename it as **Bootx64.efi** and include it in the previous directory.

Now your EFI USB Bootable drive is ready!

In our bios update package you can also find the EFI folders, already prepared to be put on your USB key.

WWW.SECO.COM

AREZZO



Qseven

MILAN



COM Express

FRANKFURT



SBC

BOSTON



ETX / XTX

BANGALORE



Carrier board

TAIPEI



Services & Solutions