

## THE WORLD'S MOST FLEXIBLE AI PLATFORM.

Built on Raspberry Pi RP2040, ESP32 and  
Clea AI Platform.

## BASED ON RP2040

The Pico-compatible part is built upon  
a Raspberry Pi RP2040 dual-core ARM Cortex-M0+,  
with a QSPI 64M-bit Flash, a 133MHz clock and  
264KB of on-chip SRAM.

## FEATURING ESP32

The fully programmable ESP32,  
based on a dual-core Xtensa 32-bit LX6,  
with a 16MB flash memory, 8MB PSRAM,  
Wi-Fi and Bluetooth.

## FULLY WIRELESS CONNECTIVITY

Wi-fi / Bluetooth / BLE

## ADVANCED SENSING CAPABILITIES

9-axis IMU + Microphone

# SPECS



## Microcontrollers

ESP32-WROVER-E

RP2040



## Memory

8 MB PSRAM

264 KB SRAM



## Flash Storage

16 MB Internal flash

64 M-bit External QSPI Flash



## Connectivity

Wi-Fi/BT/BLE



## Sensors

On chip Temperature Sensor (RP2040)  
9-AXIS IMU Motion Sensors / Omnidirectional Digital Microphone\*



## I/O

UEXT Connector (I2C, SPI, UART)

26 Multifunction GPIO pins,  
including 3 analog inputs  
(1 x UART, 2 x SPI controllers,  
2 x I2C controllers, 16 x PWM channels)  
(8 x Programmable I/O (PIO))



## Power In

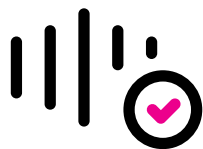
5VDC via USB-C



## Dimensions

130mm X 40mm / 5,11" X 1,57"

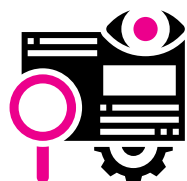
\*available only on UDOO KEY Pro



**SOUND  
RECOGNITION**



**GESTURE  
RECOGNITION**



**PREDICTIVE  
MAINTENANCE**



**OBJECT DETECTION  
& CLASSIFICATION**



**KEYWORD  
RECOGNITION**



**FACE  
RECOGNITION**